

SOKKIA

MADE IN U.S.A.

SOKKIA

**MINING
TRANSIT BOOK**

No. 8152-20

September 28, 2016

2075

2196

2272

3503

3504

3505

3506

3707

3511

November 17, 2016

2196

3503

3504

3505

3506

3707

3511

1532 *none*

2747

January 20, 2017

2075

2272

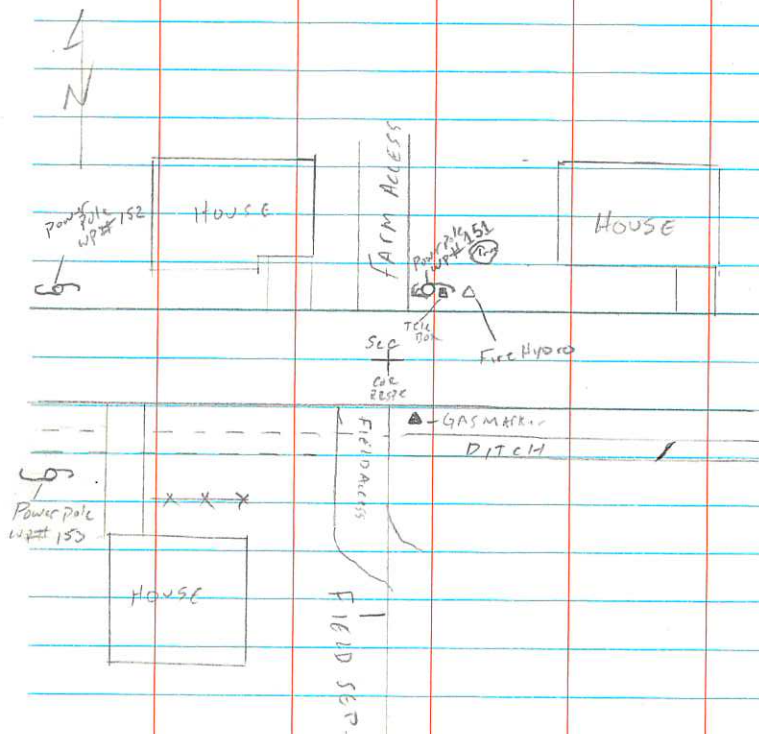
1532

2747

THURLE

LOCATION
DATE
10-28-2000 T14 NR1 E

676 South 1/4 Section 6 Found PERSPK
in center line of road & w. Held as
Section corner. Point needs 10 min
obs. to complete corner



WP# 151 is power pole, monument is 41⁰⁵ ft S.W. of WP.

WP# 152 is power pole, monument is 212²⁰ ft S.E. of WP.

WP# 153 is power pole, monument is 192²⁵ ft N.E. of WP.

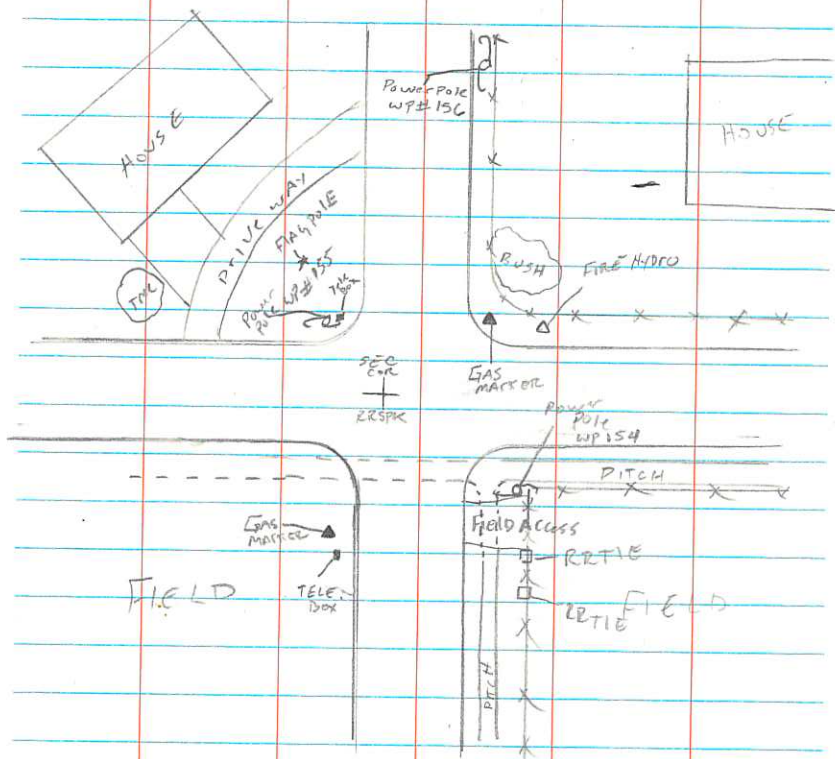
676

#606

LOCATION
DATE

8-9-2010

Found RR SPK IN THE INTERSECTION 800 W. CENTER
 Held as SOUTH EAST corner Section 6



WP# 154 is power pole, monument is ET N.W. of WP.

WP# 155 is power pole, monument is ET S.E. of WP.

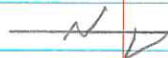
WP# 156 is power pole, monument is ET S.W. of WP.

0606

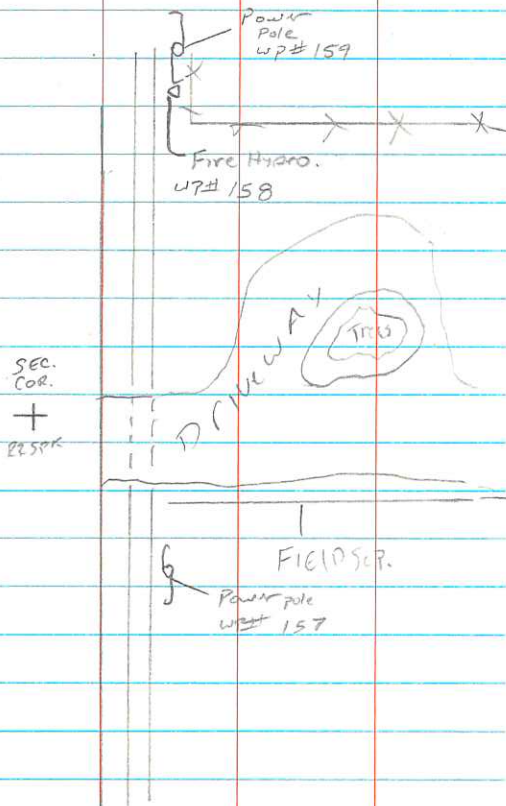
#607

LOCATION
DATE
8-9-2010

Found RESEK IN ROAD E+W Held as
SOUTH 1/4 Corner Section 5. Point
Needs 10 min obs. To complete



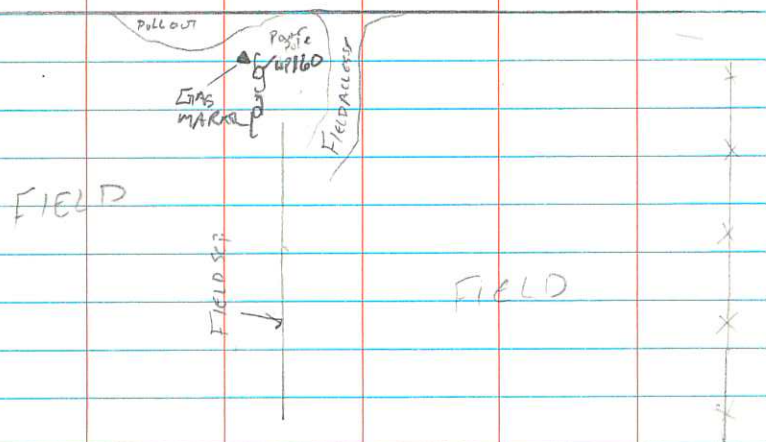
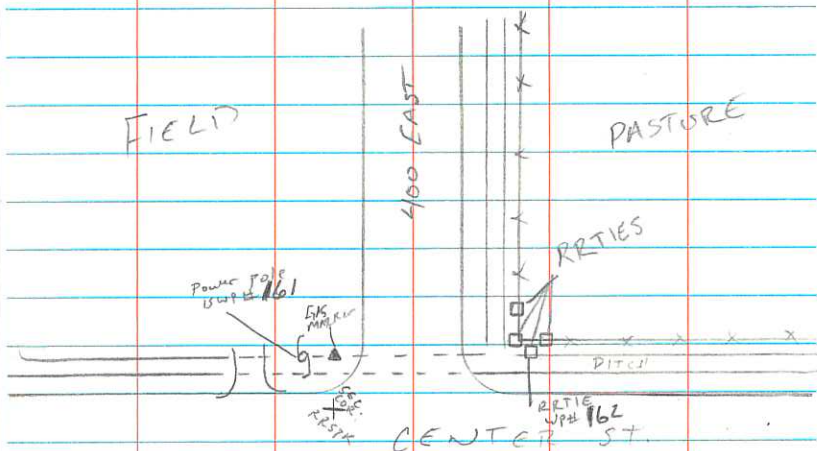
FIELD



WP#157 is power pole, monument is FT S.W. WP.
 WP#158 is TOP NOT of Fire Hydro., mon. is FT SE. of WP
 WP#159 is power pole, monument is FT SE. of WP

0607

#609

LOCATION
DATE
8-9-2010Found RR 37K IN ROAD E+W Holdings
SOUTH 1/4 section 4

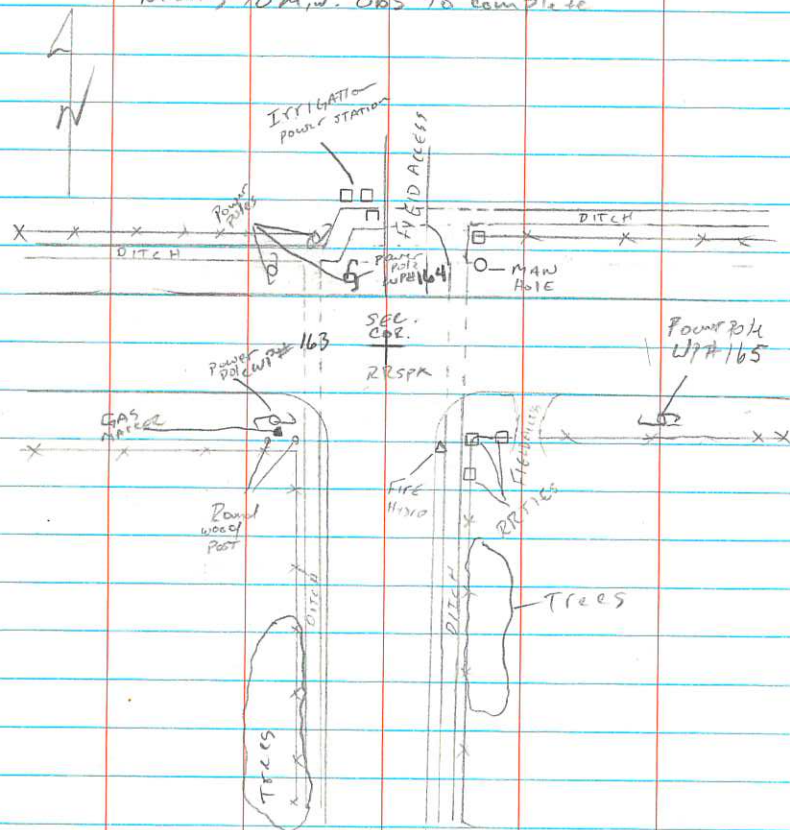
WP# 160 IS power pole monument IS FT N.E. of WP
 WP# 161 IS power pole monument IS FT S.E. of WP
 WP# 162 IS RR TIE. MONUMENT IS FT S.W. of WP

0609

#610

LOCATION
DATE
8-9-2010

Found RRSPK IN THE INTERSECTION OF
800 EAST CENTER Held as The
SOUTH EAST CORNER Section 4.
Needs 10 m.w. obs to complete



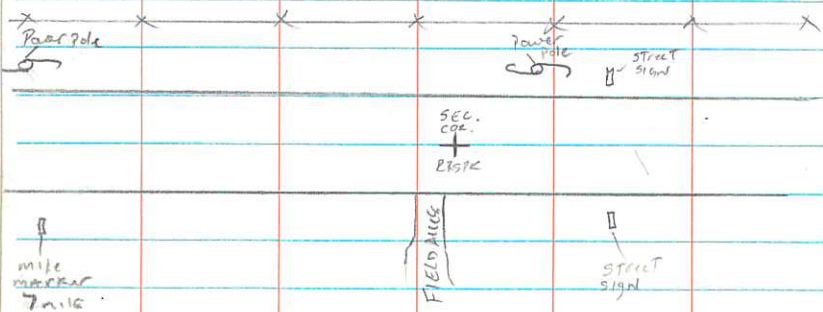
WP# 163 is Power pole monument is FT N. E. of WP
WP# 164 is power pole monument is FT S. E. of WP
WP# 165 is power pole monument is FT N. W. of WP

0610

674 LOCATION
DATE 10-28-2010

Found PRSPK IN center Line of Road
ETW Held as SOUTH EAST corner section 3

THENCE Needs 10 min. obs. to complete



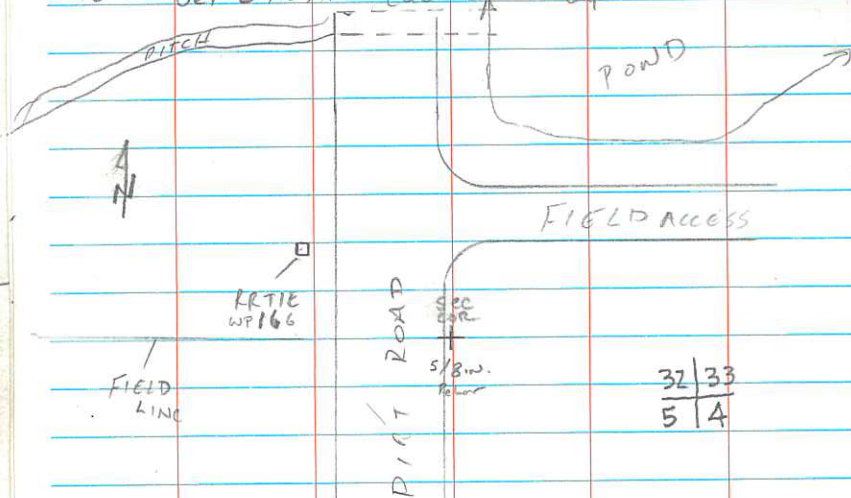
0674

#680

LOCATION
DATE
10-20-2010

Found 5/8 in. Rebar on EAST side
of dirt Road N4S. Held point as
South east corner section 32. Need
to sit more perm. monument &
to 10 min. obs. to complete.

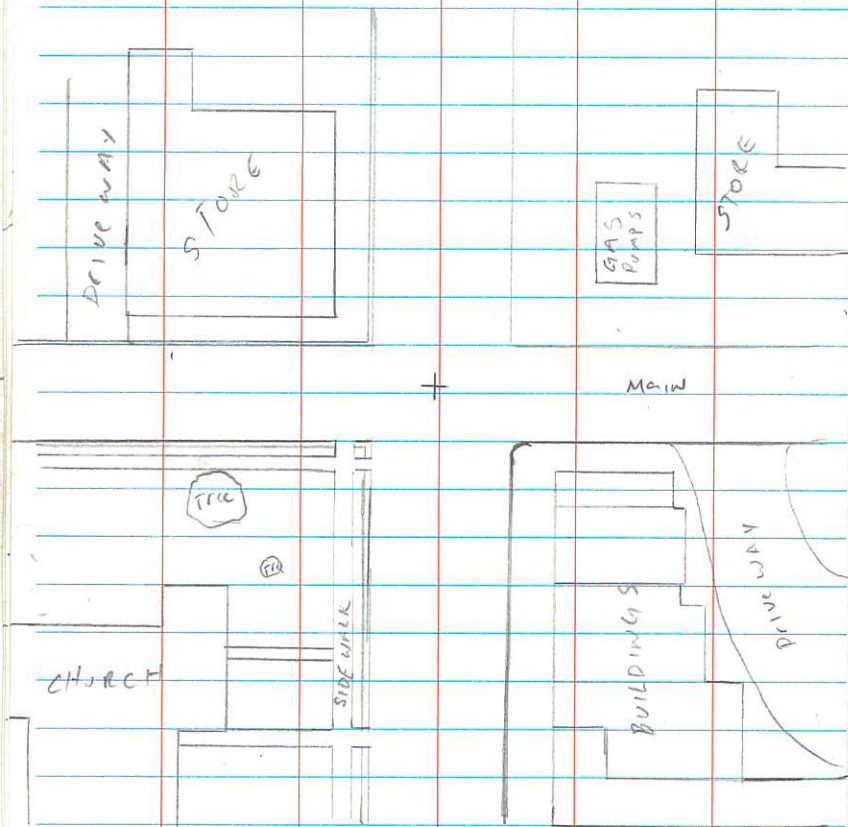
5-16-2011 Set 3 in Alum Cattle County Co. FLVSL WITH ROAD



WP166 RTIE FT N.W. of sec corner.

0680

S.E. Corner section 5



#0511

RYAN
Brady
6-8-2011

TIERRE

Base is AGRC. C.M.R. Plus

PNT #

Desc.

36 Found cattle county monument next to

pic #s

Red T-bar post. Monument is 3 in

907 Brass cap marked as SE corner section

908

12 TIZN RIE. Shot 10 min.

obs monument was set in 1972

has tie sheet.

Found stone from Steve Earl Monument
Record. Could not determine any notches
on the rock

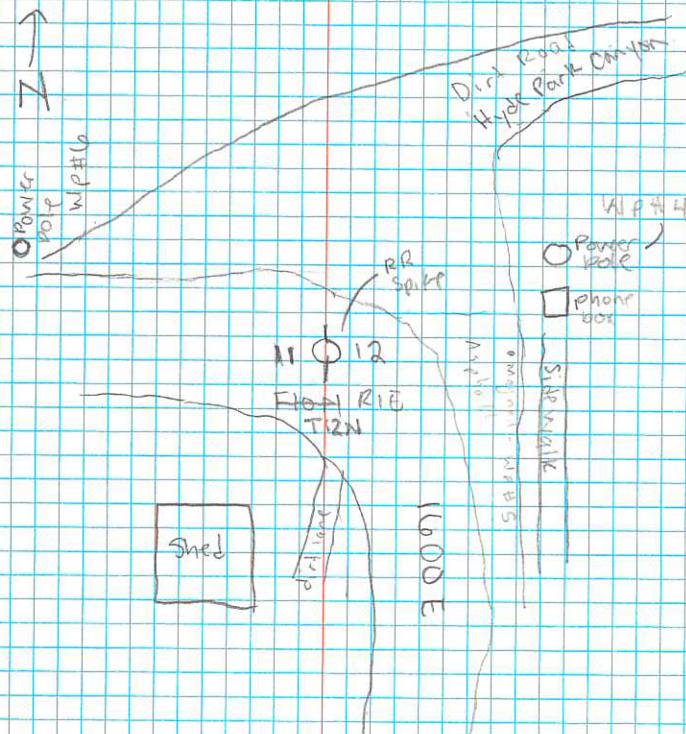
#0800

PNT #

DESC.

800

Found RESPIKE using Steve Earl
monument data held parcel as
East 1/4 section 12 TIZN RIE



WP #4 - Power pole to the E
WP #5 - May nail to the E
WP #6 - Power pole to the W

pic # 909
910

pat # 1000 W S17 T11N R1E

Found cache county Alum cap in middle
of dirt road intersection

pat # 1001 NW corner S17 T11N R1E

Found nail & RR spike in asphalt of 1800S
near intersection ^{of} 1800S & 1600W.

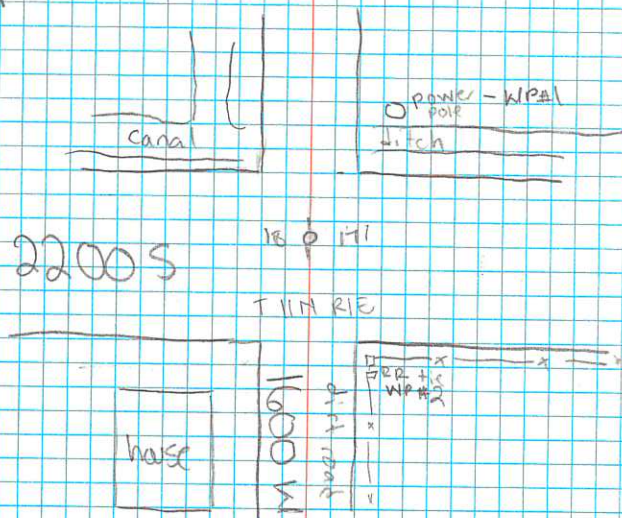
#0801

Ryan
Brady 6/8/11

Job # T11N R1E

pat # 801

N
↑



Found RR spike in center of intersection

Did 10 min observation. We held this point as
the NW corner of S17 T11N R1E

WP#1 - power pole NE of corner
WP#2 - RR tie SE of corner

TIE sheet
Done
7-15-2013

2012

Ryan Brady 6/09/11

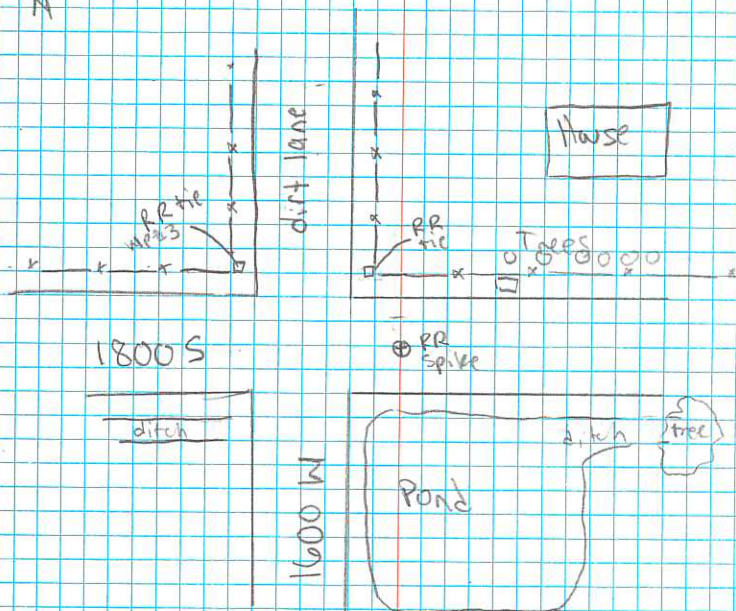
Job # T11N R1E

pat # 802

pc # 912
913

718
18117
T11N R1E

4
N



Found RR spike in asphalt East of Intersection.

WP#3 - Railroad tie NW of corner 48.11ft - 129°42'06"

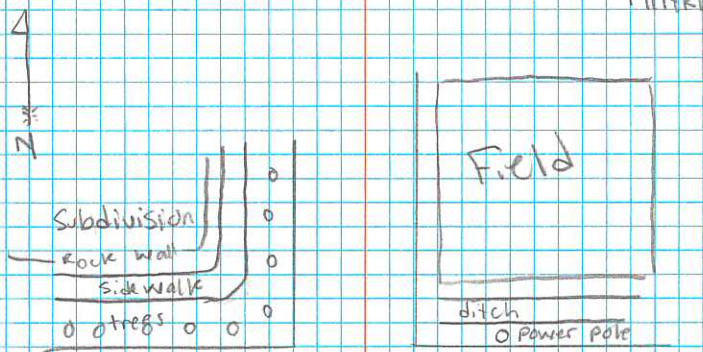
WP#4 - Railroad tie N & slight W of corner 21.21ft +
170°05'15"

Did 10 min observation. Held this point as
NW corner of S17 T11N R1E.

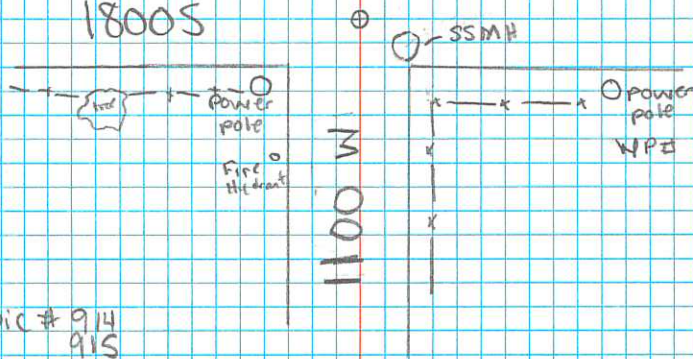
Plot # 803

North 1/4 S17 T11N R1E

8
17
T11N R1E



1800 S



pic # 914
915

- WP # 5 - Power pole located SW of intersection
- WP # 6 - Power pole located NE of corner
- WP # 7 - Power pole located E of intersection

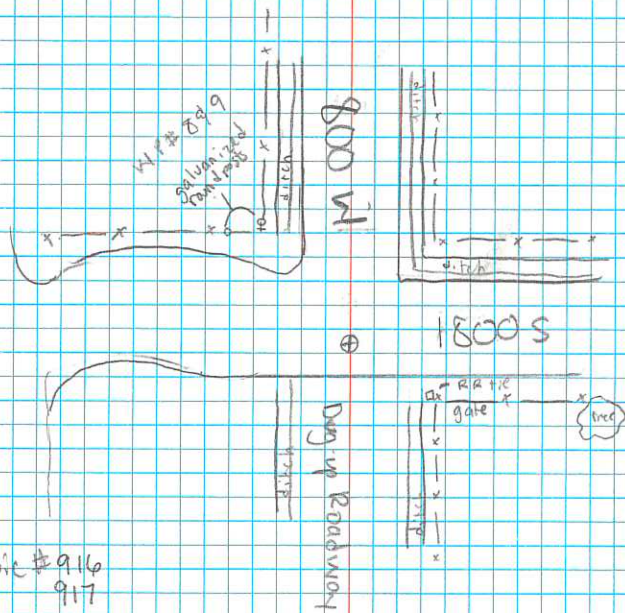
Found RR spike in asphalt in middle of intersection.
Did 10 min. observation held this point as
N 1/4 of S17 T11N R1E.

#804

N
↑
↓

HWY 89-91

819
17116
TINN RIE



pic # 916
917

- WP # 9 - Round galvanized fence post W 9 slightly N from corner
- WP # 8 - Round galvanized fence post NW of corner
- WP # 10 - RR tie in fence SE of corner

Found RR spike in asphalt in intersection of

Did 10 min. observation. Held this point as NW corner of SIT TIN RIE.

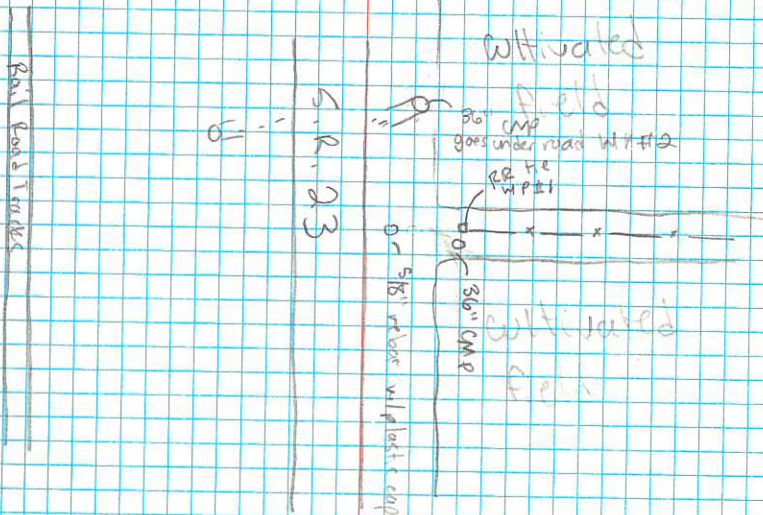
Base is AGRC. CMR. PLS

Job # TISN RIW

RYAN
BRAON 7-07-11

PNT #832

SW corner 534 TISN RIW



Found 5/8" rebar @ cap with
PLS # 3267360 as
turned into the county by Brian Allen
Accepted this point as SW corner 534 TISN RIW
Did 10 min. observation

WP #1 - RR tie west of corner in fence
running W
WP #2 - 36" CMP approx. 411' SW of corner

PIC #979
#980

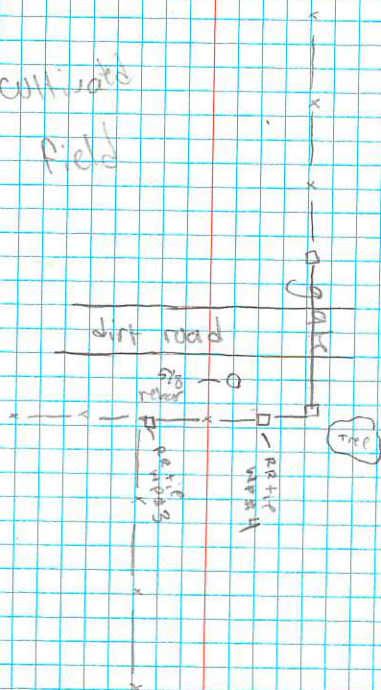
PNT# 833

S¹/₄ S34 T15N R1W



Cull yard

Field



Found 5/8" rebar with Allen cap.
P.L.S # 3267360 on shoulder of dirt road
Accepted this point as S¹/₄ S34 T15N R1W.
Did 10 min. observation.

WP# 3 - RR tie SW of corner

WP# 4 - RR tie SE of corner

pic # 981
982

RYAN
Brady
9-15-2011

Job

Cold water

X@ 1000

H. 5-85

PNT#

Pesc.

1004

Found brass cap monument marked
as West 1/4 section 13 T 10 N R 3 E
did 10 min obs. Point has tie
Sheet

RYAN
Bundy
11-1-2011

T 13 N R 1 E

Base is AGEC. C.M.R. Plus

Ant. height = 4.55

PNT #227

Desc. SE corner

SS TIBNRIE

Found a $\frac{5}{8}$ " rebar as described
on old tie sheet. Accepted this as corner.
Set 3" Alum cap in place of rebar, with
rebar on the East side of monument.

Did 10 min. observation.

pic # 1104

1105

RYAN 11-3-11

BRADY

TIBNRIE

Base is approx. 2. plus $H_1 = 4.35$

PNT#

276 West 1/4 section 20 is 3.0 mi. cap
Found using old fire station monument
was set 11-9-1982

RYAN 11-08-V
BRADY

T13N R1E

Base is AGRC. CMR. plus

ht = 5.59

W 1/4 S31 T13N R1E

PNT# 0146

Re-shot corner. Did 10 min. observation.

Coordinates on tie sheet were wrong.

pic # 1108

1109

PNT # 0451 S 1/4 S 26 T13N R1E

pic # 1110

1111

Found 2" x 30" Alum pipe & cap.

Did 10 min. observation.

R-raw

11-9-2011

T13N R1E

Base is AGRC CWR Plus H1=5⁵⁹

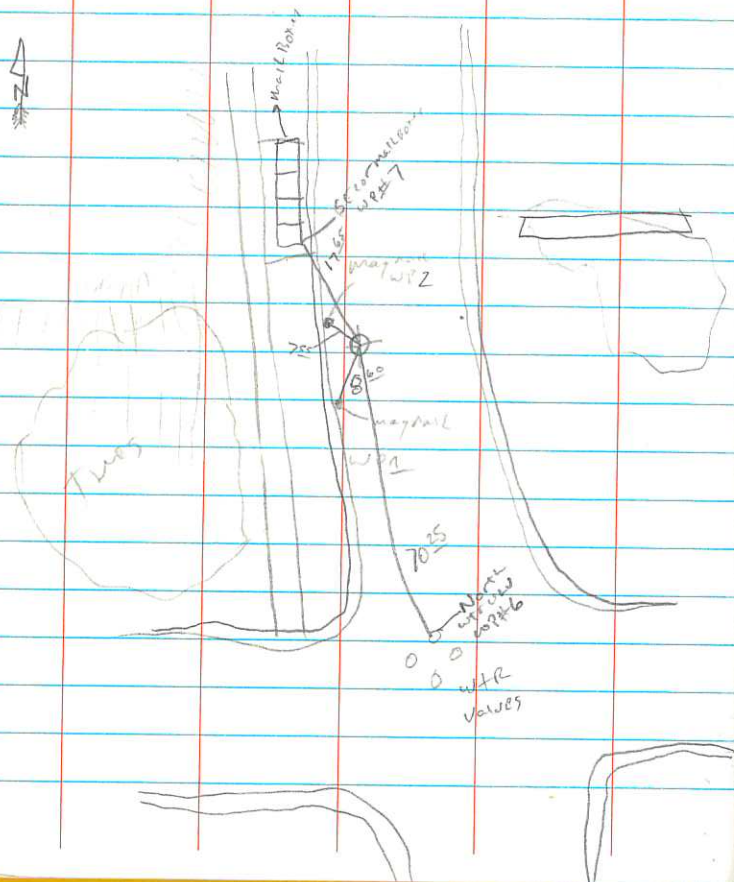
PNT# Desc.

10 Food mag nail west of center line

Pic#s North of upper canyon Road mag

1112 Nail is the section corner SE corner

1113 Section 22 + 13N R16. Mag nail was
Set by Brian Lyon. I replaced nail
with zinc alum cap on 2 FT Rebar.
did 10 min obs.



Brian
Lyon
6-27-12

HARDWARE
SEC CORN.

100 WP# 1000 1

H1 = 430

set with

1001 H1 = 499 did 10 min obs.

RYAN
LARRY
6-28-2012

Hard hat line
SC

TG 1001

H₁ = 41.8Z

✓ West 1/4 Section 13 T10N R3E PNT# 100Z

N. 3743 535.644

E. 162 4110.057

Elev. 5598.209

Temp.
PNT#

Disc.

1003

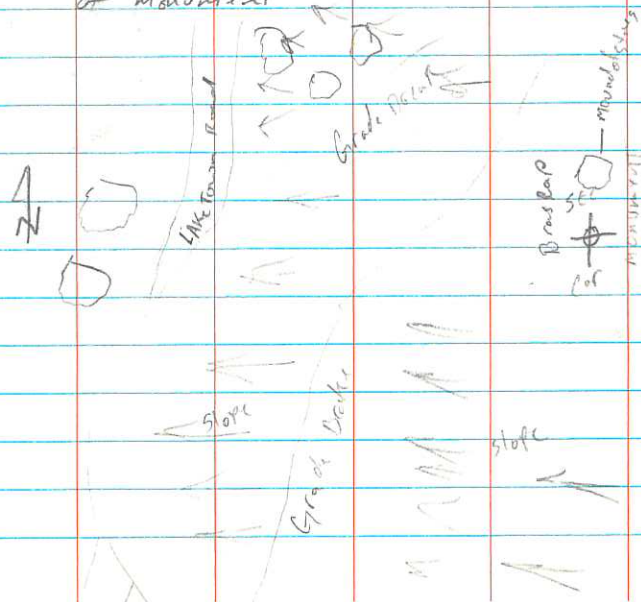
A₁ = 3²⁵

PIC#

Found Brass cap monument marked

"U.S. DEPT OF THE INTERIOR BUREAU OF LAND
MANAGEMENT N 1/4 SEC 13 S 1/4 SEC 12
T10N R3E SET 1968 Point 15 14

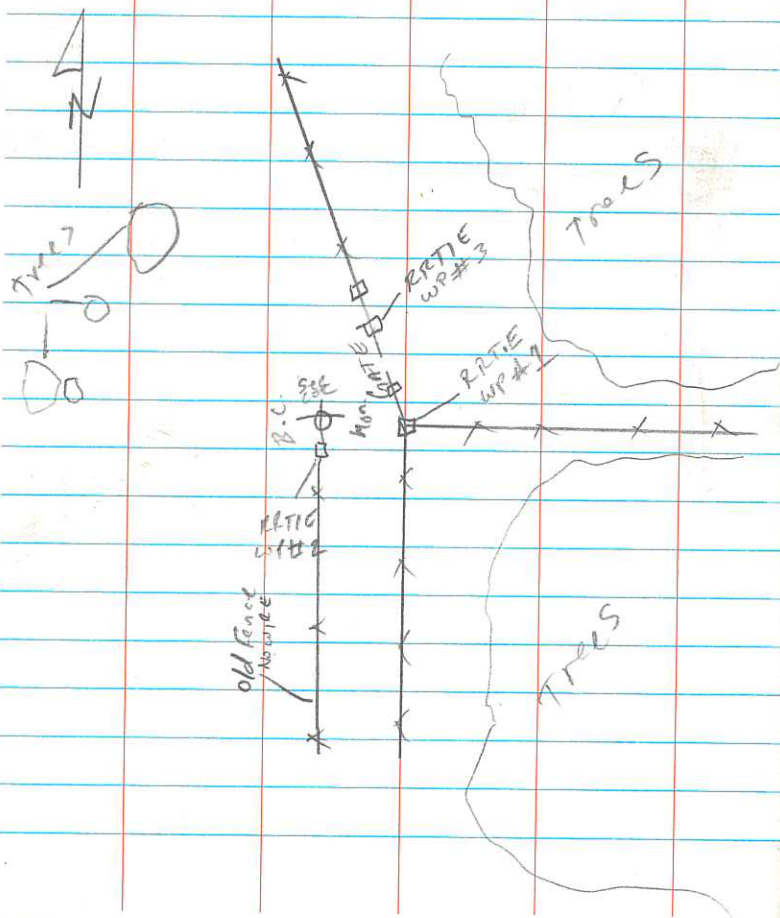
a mound of stones on The 250 FT EAST of
Lake town Road ON A WEST Facing
slope. Second mound of stones 5 FT North
of monument



Temp
PNT#

Desc.

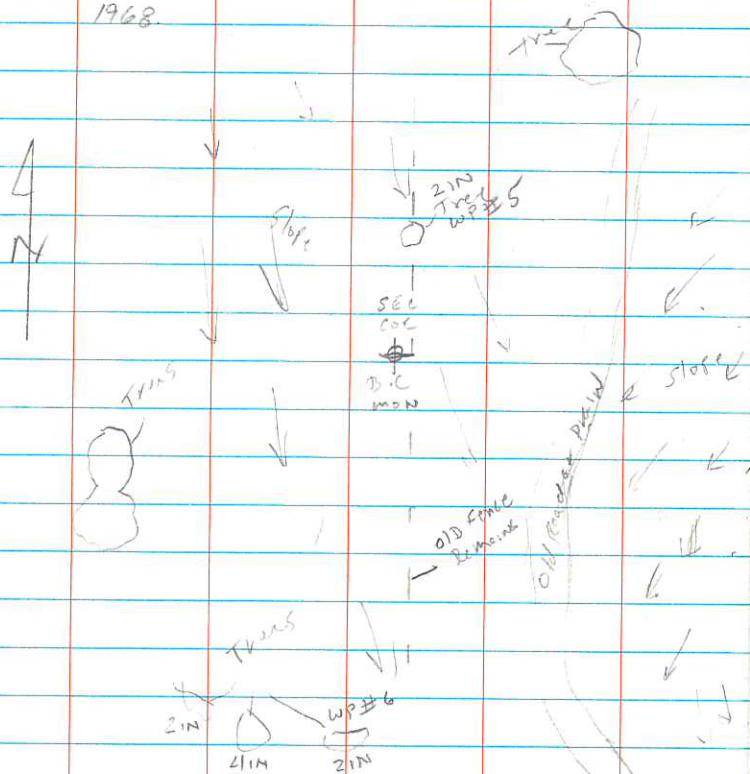
1004 Found brass cap monument marked
U.S. DEPT. of THE INTERIOR Bur. of Land
MANAGEMENT North 1/4 section 1 T10N R3E
SOUTH 1/4 section 36 T11N R3E set 1968
point is FT West of fence corner N+STE
and FT North of RRTIE monument
is Tipped a bit to the NE.



Time
PNT#

Desc

1005 Found Brass cap in mound at station ON 5013
Facing slope 40° west of old Road or
Dry Drain NE + SW monument is marked
U.S. Dept of the Interior BLM at Land manager
EAST 1/4 section 36 T11N R3E S4E set
1968.



Hardware Park
S.C.

RIAN

Left
7-9-2012

Base @ W31001 H1.4⁹⁴

Temp. Post. #

Disc.

10,000 Found Stone in Fence N+S. Stone
is 17 in X 8 in X 6 in. Stone size matches
Desc. in all notes for sections
25, 26, 35, 36 T11NR3E. Needs
to be monumental did 5 second obs.
to check dist.

10,001 Found Brass cap monument marked
as S.E. corner section 34 C.C. monument
may be missmarked

10,002 Forest service monument

Found N¹/₄ section 4 T10NR3E
Brass cap monuments
No Radio signal

RIAN

LARRY

8-2-2012

T9NR3E

Found stone clearly marked $\frac{1}{4}$ S.C.
Holding as the south $\frac{1}{4}$ section 32
T9NR3E. NEED to set monument
and draw tie sheet. 9-11-2012 Set
monument. 3 in alum. pipe w $3\frac{1}{2}$ in alum cap.
2 FT Deep set stone north of monument.
Found mound of stone SW 31 T9NR3E
Need to measurement. 8-6-2012 Found
cache county cap need to get tie
sheet

RYAN
LERRY
8-7-2012

T9NR3E

5/4 section 31T9NR3E

Found stone clearly marked with 1/4 on
North Face Rock is 2in above surface
took slot with trimble GeoX⁺ marked
a birch aspen with blaze 5 ft North
of corner and marked birch aspen
with Blaze 12 ft south. Need to
set a more visible and permanent monument
9-5-2012 I set 3in alum pipe w 3 1/2 in
Alum. cap. Cap is 12in above the ground
put Stone on North side of the monument.
I need to draw a tie sheet.

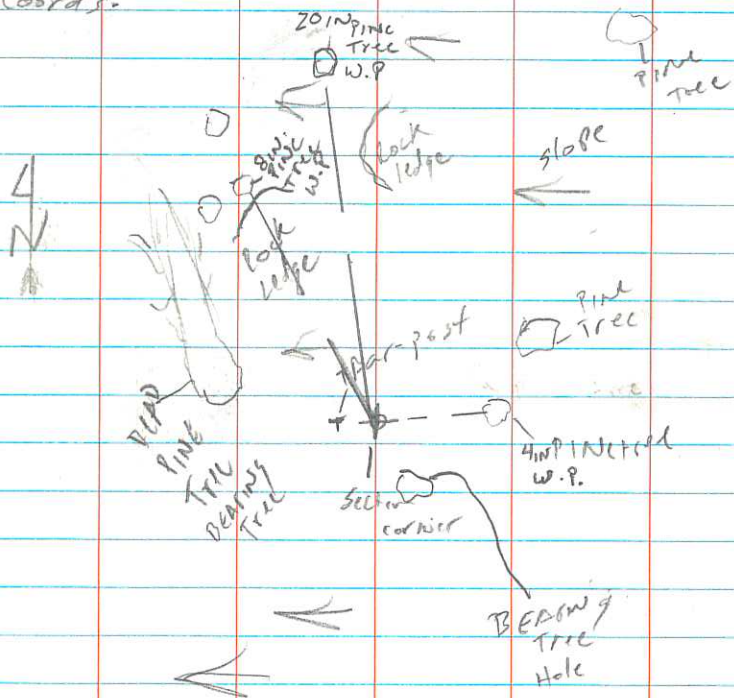
RYAN
Lerry
8-9-2012

T9NR3E

SE 36 T9NR3E

Found cache county alum. Cap with
No other markings 2^{FT} North of
Fence E+W & 100 FT +/- East of
Dirt Road SE + N wa. I have Not
Found Record of Cache County setting
This point. The point is close to
The location for the SE corner 35
T9NR3E. Shot point with Trimble
GeoXH GPS.

Found S.E. corner SECTION 36 T9NR3E
 and S.W. corner section T9NR4E
 Brass cap monument in mound of
 stones next to a Bar post on west facing
 slope monument was leaning to the
 west took shot at the base of MON.
 with a Trimble GEO. X It to get
 coords.



Found East 1/4 section 33 T9N R3E

Sandstone 13 X 8 X 7 Firmly set and clearly

marked on the west face of the stone

Stone was set in mound of stones

2 FT round sticking up 5 inches.

point is in line with a fence South + West

Fence corner is 1/2 Ft South of stone.

Needs monument

RIAN
LARRY
8-16-2002

T9N R3E

Found section Stone Finally set and clearly
marked as The S.E. Corner Section 32 T1N3E

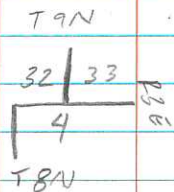
Found limestone 14X12X6 with 4 notches E.

2 notches W. Needs monument

9-6-2012 set monument. 3 in alum pipe with

3 1/2 in alum cap Need to allow tie sheet

I have a position with a Trimble GEOXH



RYAN

LARRY

8-21-2012

T1N3E

ON May 24 2012 I found stone
firmly set and clearly marked w $\frac{1}{4}$ oz
North Face Held as The North $\frac{1}{4}$ sec. 36 TRIMBLE
Set monument 8-21-2012 need to
shoot 10 min Obs. and draw tie
Sheet to complete. I have a postho with
a Trimble GeoXH

RYAN
LARRY
8-23-2012

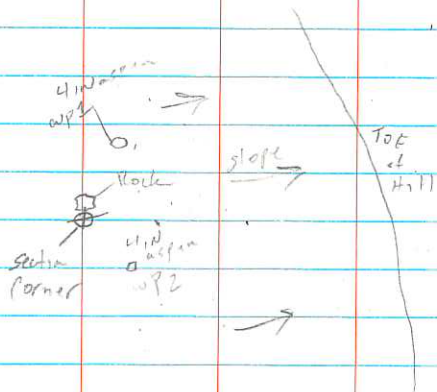
set E¹/₄ section 3 TION 236 IN
Place of Rock That was firmly set and
Clearly marked ¹/₄ on The West Face
Rock is set west of The 3 IN alum. Cap
That is on a 3 FT 2.5 in alum. pipe.
There is an old wood post 1 FT south
of The monument and a mound
of stones 2 FT west.

Niel to get 10 min. obs and tie
sheet to complete. I shot the point
with a Trimble GeoXH.

R/AN
Brady
9-11-2012

21N236

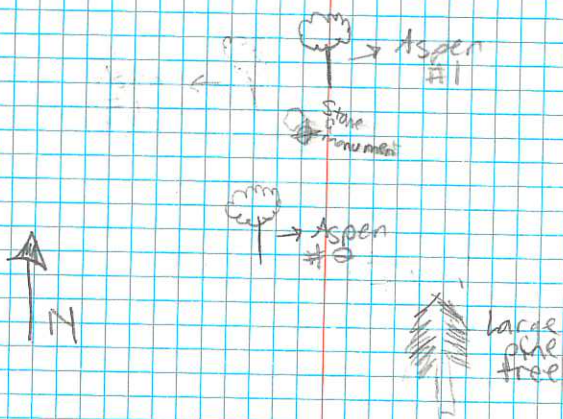
South $\frac{1}{4}$ section 32 T9N R3E
 Set 3" alum pipe 2ft deep with
 3" alum cap on East face of
 slope set stone just North of monument
 Put marker on 4" w aspen ENE
 of monument and put marker on
 4" w aspen ESE of monument
 I have a position on the monument I
 got with a Trimble GEO XH.
 monument is in aspens



9-11-12

South $\frac{1}{4}$ Section 32 T9N R3E

Set 3" Alum pipe. Found original stone.
 Set stone on North side of pipe.
 Blazed two 5 inch aspen trees; one North of ^{east} corner
 the other is SW of _{corner}
 Took a GPS position on the monument
 with a Trimble GEO XH.
 Monument is located in scattered aspens.
 There is a large pine tree south of corner.
 It's the only large pine near corner.



SE of Section 32 T9N R 3E

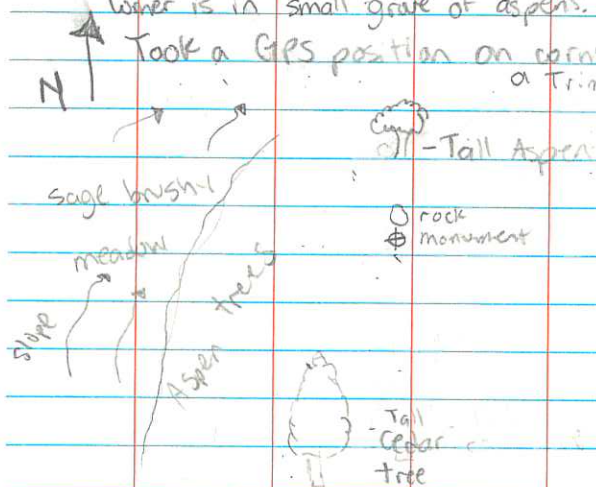
Standard Corner

Set 3" Alum pipe 2ft deep with original marked stone on the North.

There is a tall aspen tree to the North.

Corner is in small grove of aspens.

Took a GPS position on corner with a Trimble GEOx #



Ryan E Brady
9-12-12

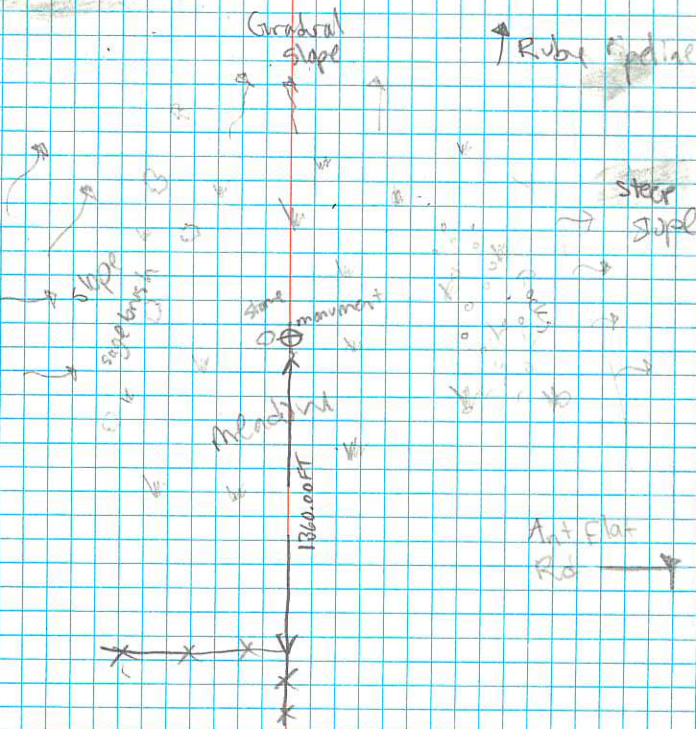
East 1/4 Section 33 T9N R 3E

Set 3" Alum pipe and placed original marked stone on west side of pipe.

Took GPS position on monument with a Trimble GEOx #.

Corner is approx. 4162.00 FT west of the Ant Flat road.

Ruby pipeline is approx. 850.00 FT north of corner.



Ryan
Drady 9-17-2012

Hardware S.C.
TIDNR3E

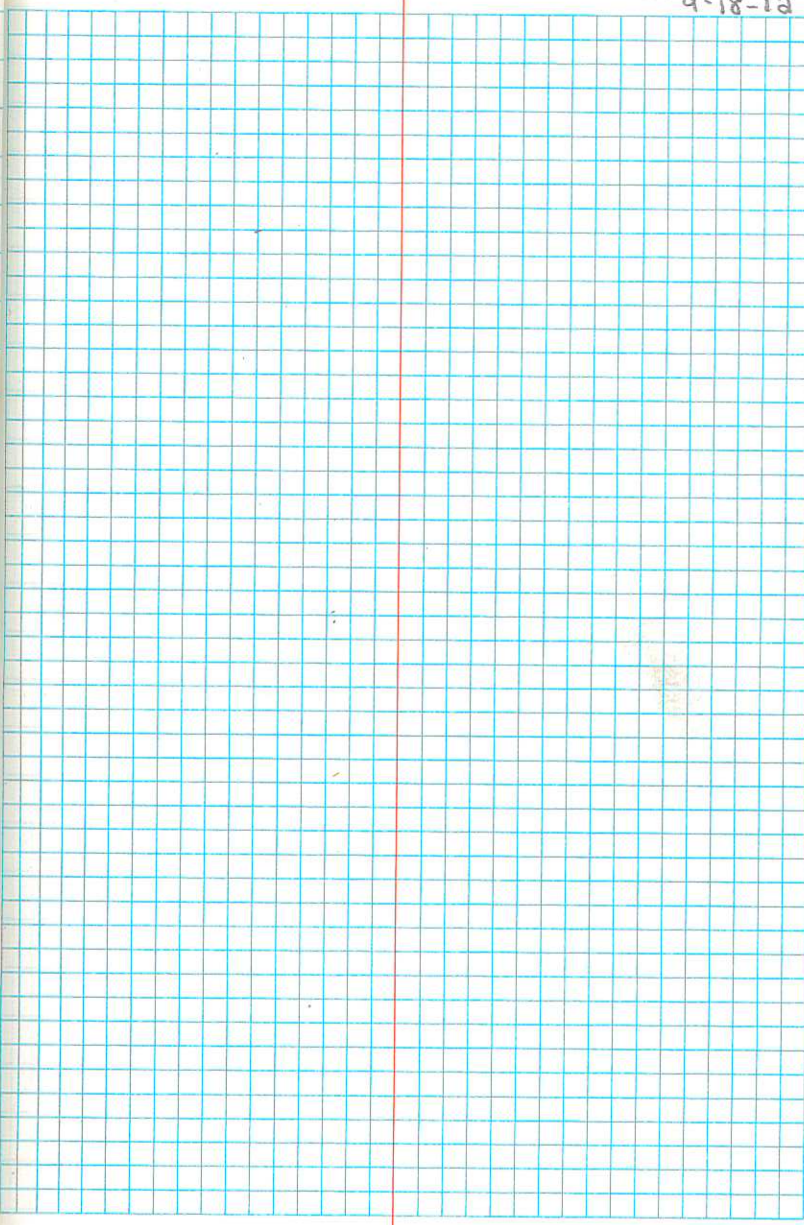
TR WP 1001 H1 = 4⁴²

✓ PNT# 1004

PNT#

DESC

RYAN
BRADY 9-18-12

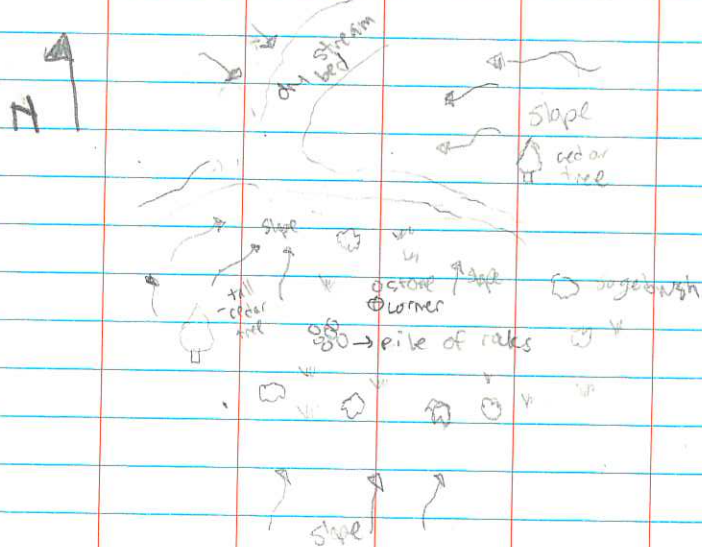


TQ 1001 H1 = 433

Pnt #

Desc

10.003 N 1/4 section 36 T11N R3E Found stone
clearly marked w/ 1/4 on North Face
Set monument

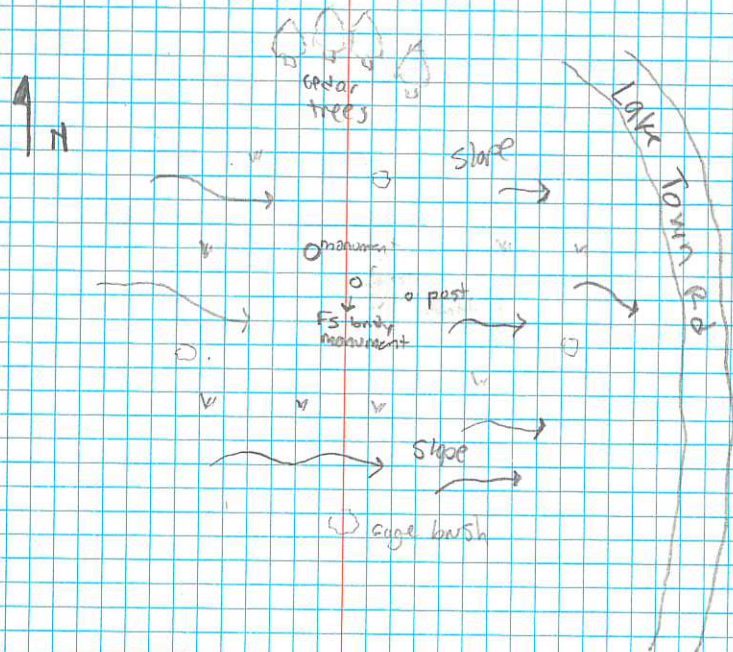


Pnt # 10.004

Desc

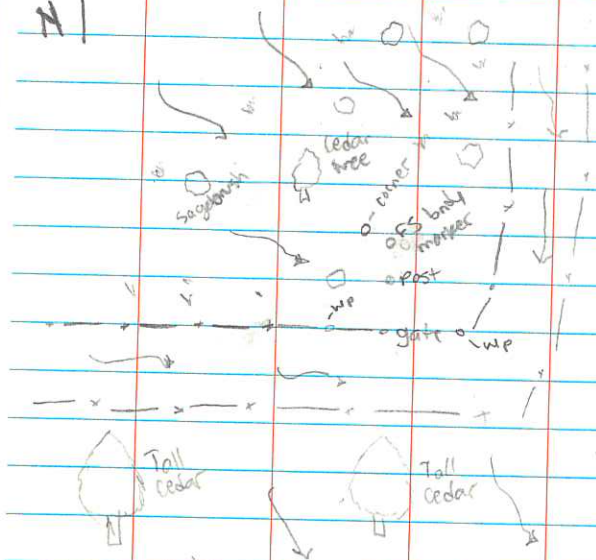
Found monument marked as NE corner
S36 T11N R3E. Set in 1968 by BLM.

Did 10 min observation. Monument is
on E slope of hill _____ ft west of
Lake Town Road.



PNT # 10,005

Found Cache County monument marked as the
SE corner S36 T11N R3E. Set in 1968
by BLM. Did 10 min observation



E14 S3 T10N R3E

PNT # 10,006

Found original stake with Y4 on west side.
Replaced stake with 3" Alvin pipe and set stone
on west side of pipe. Corner is located on top of hill,
in a fence line running north & south, next to
tall wooden fence post.

